

S1

Manual Clamping Shaker



➔ Small Footprint

➔ Designed for
1-5L Cans

SANTINT • CHINA

Add: Feilong Road, Xingyang,
Zhengzhou, China
Email: info@santint.com

SANTINT • HOLLAND

Add: Lageweg 35 - J, 2222 AG
Katwijk The Netherlands
Email: sales@santint-europe.com

SANTINT • POLAND

Add: 19 Postępu Street
(warehouse no. 5)02-676
Warsaw, Poland
Email: albert@santintpoland.com

SANTINT • U.S.A

Add: 2000 Bloomingdale Road,
Suite 205, Glendale Heights,
IL 60139, U.S.A
Email: dino@santintusa.com

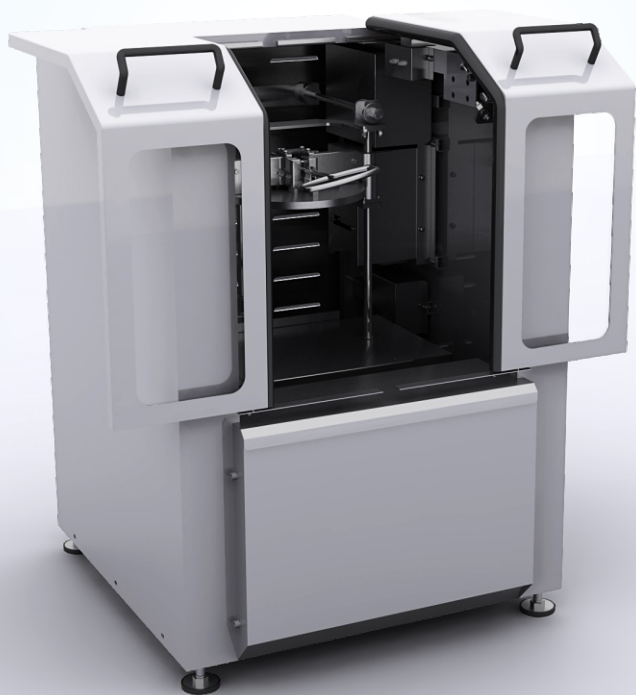
SANTINT • BRAZIL

Add: Rua Rosa Kasinski,
1109 (Galpão 30) - Capuava
- Cep: 09380-128 - Mauá / Sp
Email: marcos@santint.com

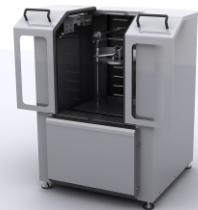
SANTINT • INDIA

Add: Building No.E3 , 2/3 , Hari
Hari Compound, Near Gajanan
Petrol Pump, Mankoli Nana,
Bhiwandi 421302 Thane India
Email: nick@santint.com

S1 FEATURES >>>



1 Bi-directional Sliding Door
User-friendly operation



2 Specialized in Efficient Shaking;
Expert in 1-5L cans shaking;
Shaking speed is up to 770RPM.

3 Simple Structure
Stable Performance



4 Space Saving
0.3m² Only

- Shaking Mode Vibrational
- Shaking Time 0-300s(Optional)
- Max Shaking Weight 10kg
- Shaking Speed 770rpm

- Machine Dimension(W X D X H) 565×610×840mm
- Packing Dimension(W X D X H) 600×640×940mm
- 54Pieces/20GP

- Net Weight 105kg
- Gross Weight 125kg
- Power Supply 220V/110V 50Hz /60Hz
- Power 375W

S1
Technical
Parameters

